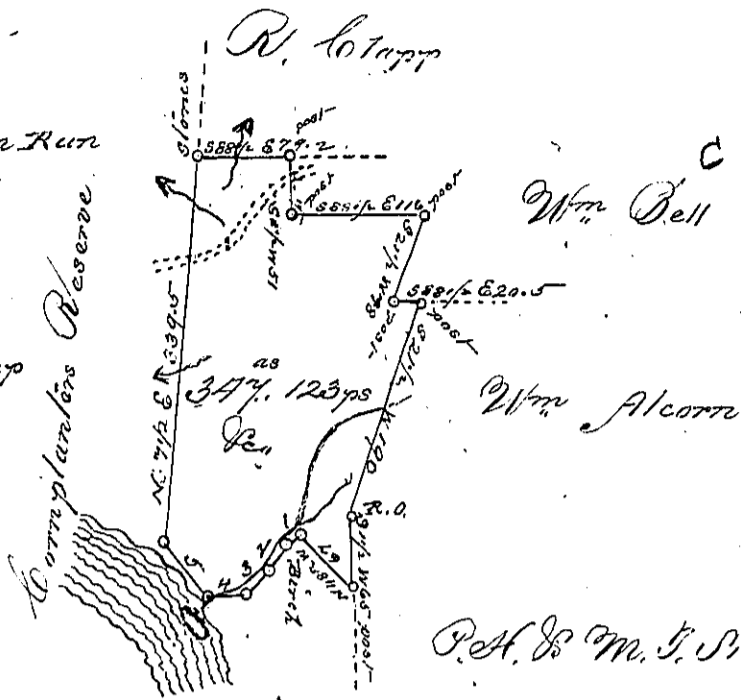


C 3-275'

- Courses & Distances down Run
from Birch
- N^o 1 S 69 1/2 W 12. W.A.
 - " 2 S 9 1/2 W 31 Chest. O.
 - " 3 S 36 1/2 W 27 Birch Stamp
 - " 4 N 88 1/2 W 36.7 W.O. Bush
- Down River
- " 5 N 43 1/4 W 60 post



P. H. & M. J. Sivert

Draft of a tract of land situate in Complanter Township
Venango County North of and adjoining the Allegheny River
Surveyed 12th May 1848 for Wm Bell on improvement and settle-
ment.

To John Laporte Esq^r Sur. Genl.

Chas. H. Hydrick N.J.

IN TESTIMONY that the above is a copy of the original remaining on file in the
Department of Internal Affairs of Pennsylvania, made con-
formably to an Act of Assembly approved the 16th day of
February, 1833, I have hereunto set my Hand and caused
the Seal of said Department to be affixed at Harrisburg, this

Ninth day of April 1891

Thos. Stewart
Secretary of Internal Affairs